

EXHIBIT 1 - PRODUCT LABELING

Proposed CE Label Format

GPS VEHICLE TRACKER

Model: X3

Rating: 12/24V== 300mA or

Powered by 3.7V==450mAh Li-ion Polymer Battery



Importer name: XXXX

Importer address: XXXX

Shenzhen Concox Information Technology Co., Ltd

4/F, Building C, Gaoxinqi Industrial Park, Liuxian 1st Road,
No. 67 Xin'an Street, Bao'an District, Shenzhen, China

Made in China

Specifications: Text is Black in color and is justified. Labels are printed in indelible ink on permanent adhesive backing or silk-screened onto the EUT or shall be affixed at a conspicuous location on the EUT. The 'CE' marking must be affixed to the EUT or to its data plate. Where this is not possible or not warranted on account of the nature of the apparatus, it must be affixed to the packaging, if any, and to the accompanying documents. The 'CE' marking is allowed less than 5 mm but must clear. If the 'CE' marking is reduced or enlarged the proportions given in the above graduated drawing must be respected. The Importer name, address and Manufacturer name and address should indicate on marking label or packaging or in a document accompanying

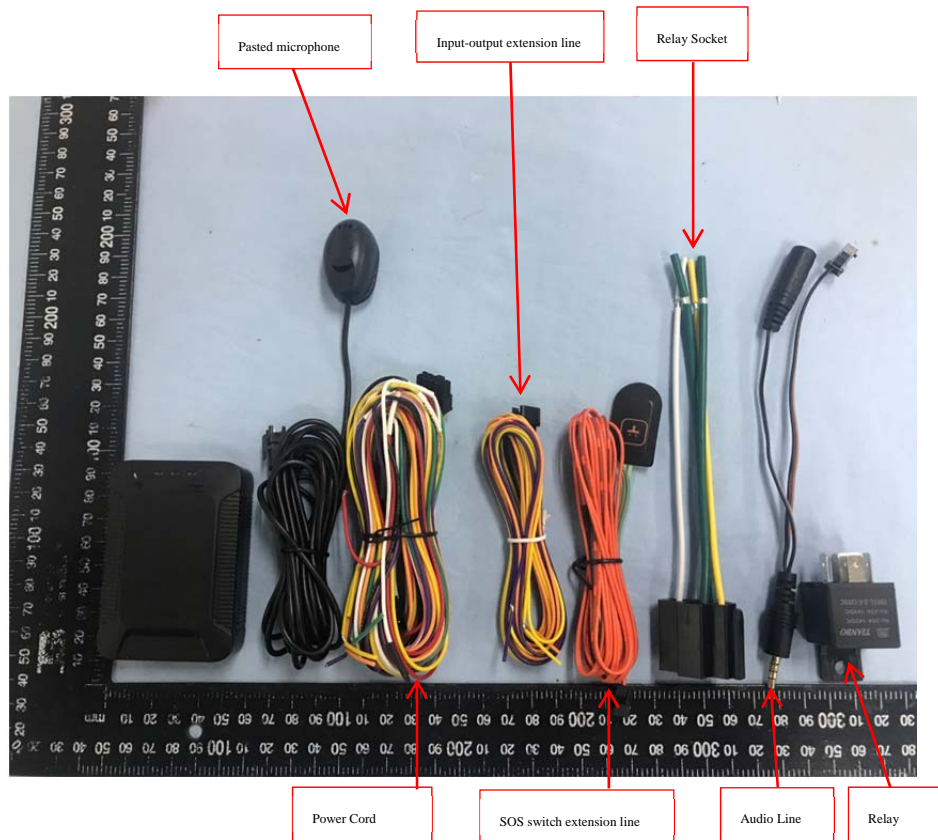
Proposed Label Location on EUT

CE Label Location



EXHIBIT 2 - EUT PHOTOGRAPHS

EUT View 1



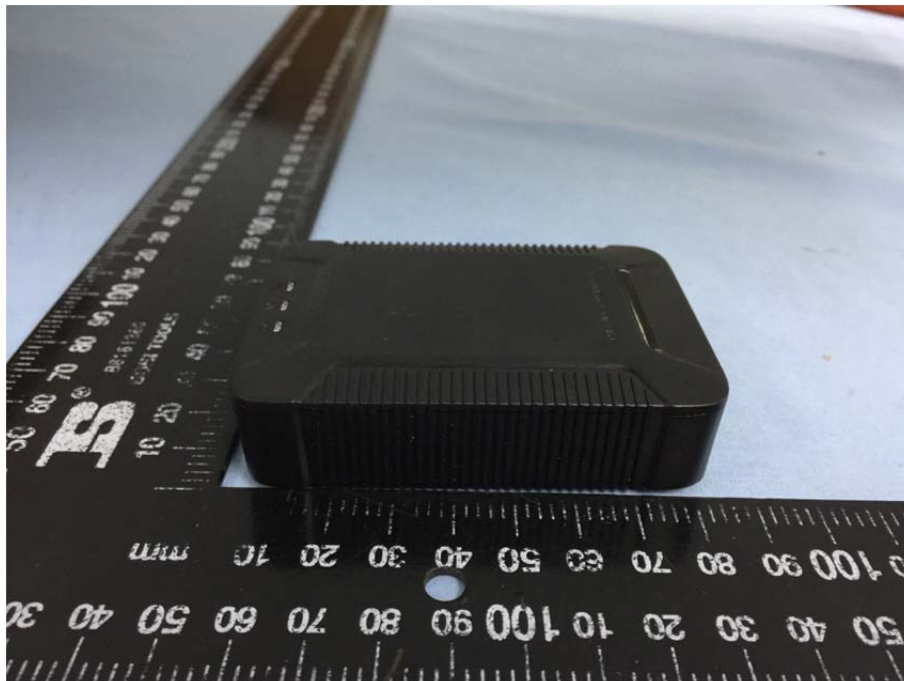
EUT View 2



EUT View 3



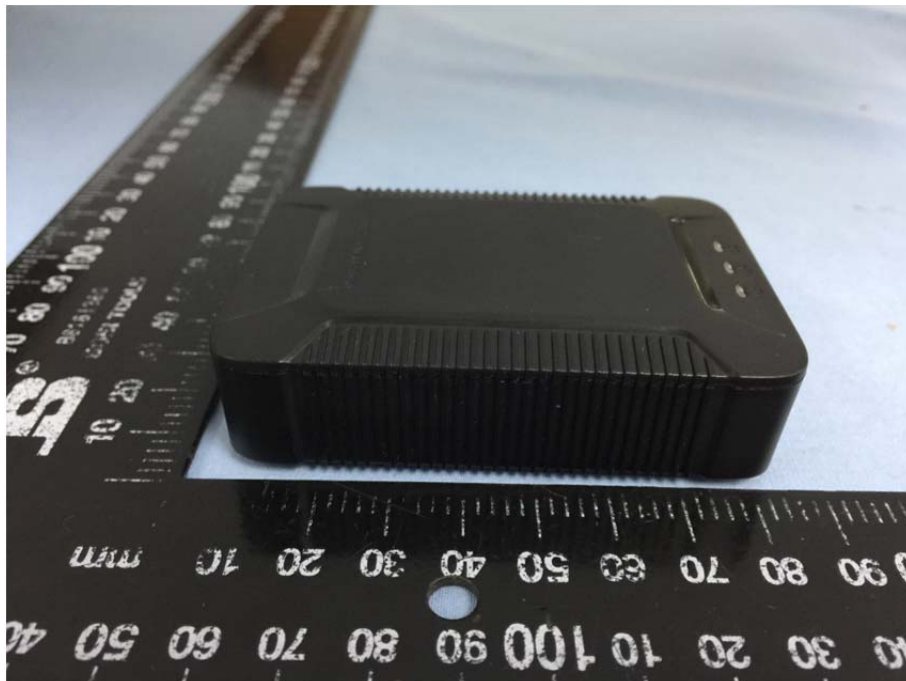
EUT View 4



EUT View 5

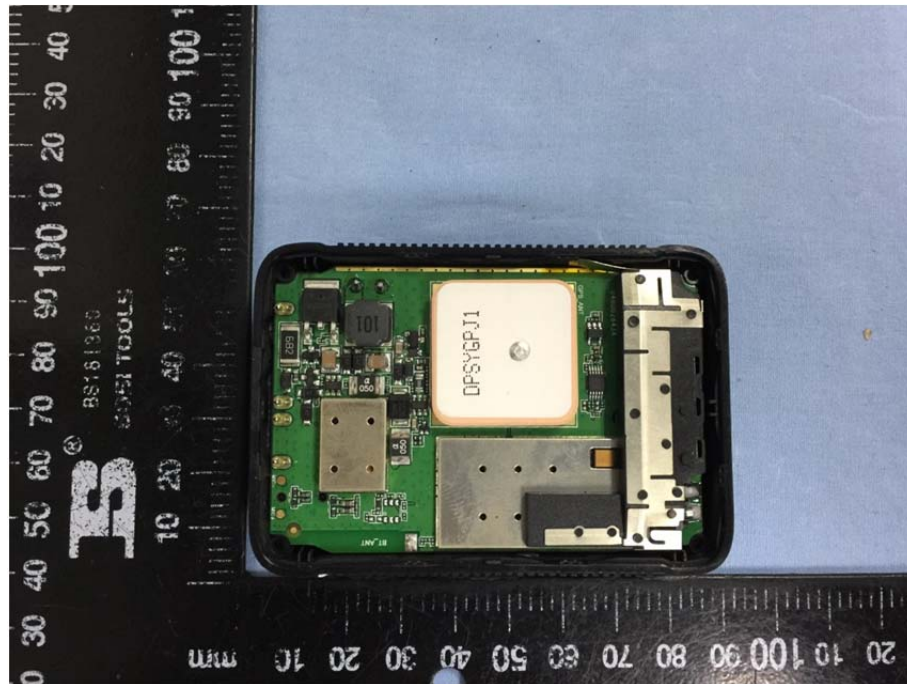


EUT View 6

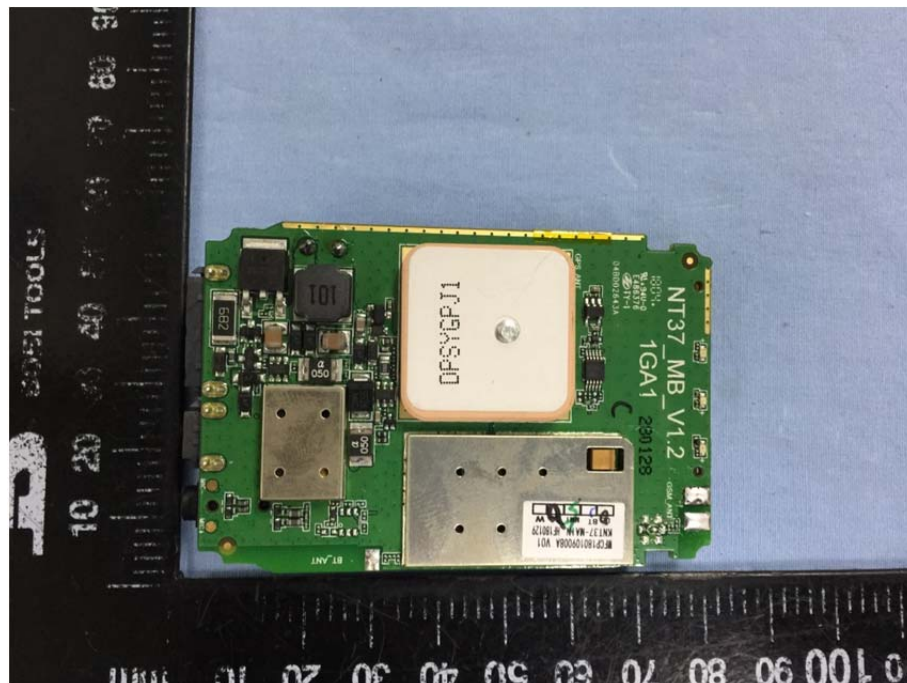


EUT View 7**EUT Housing and Board View 1**

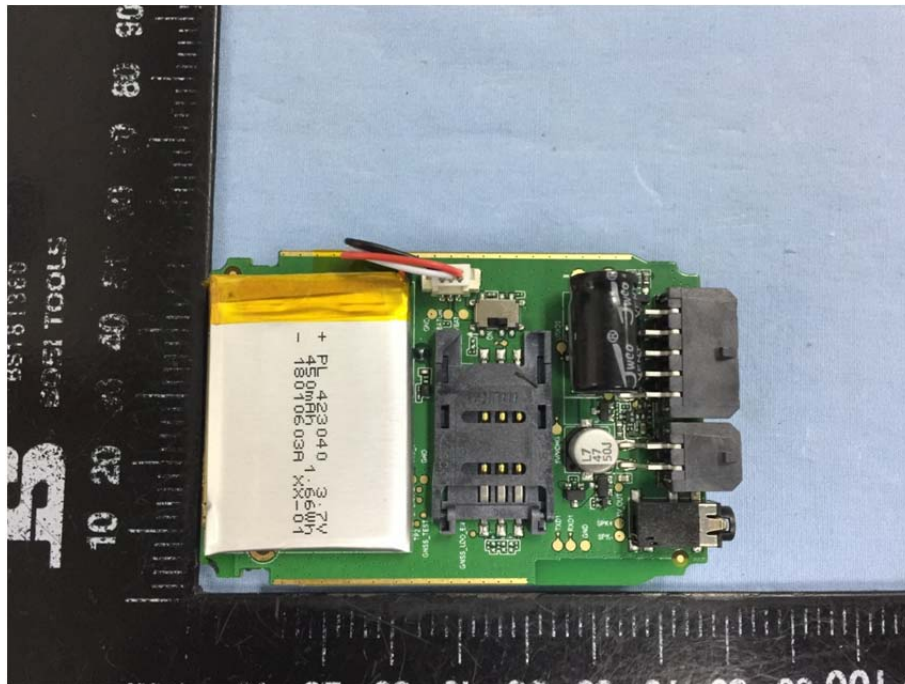
EUT Housing and Board View 2



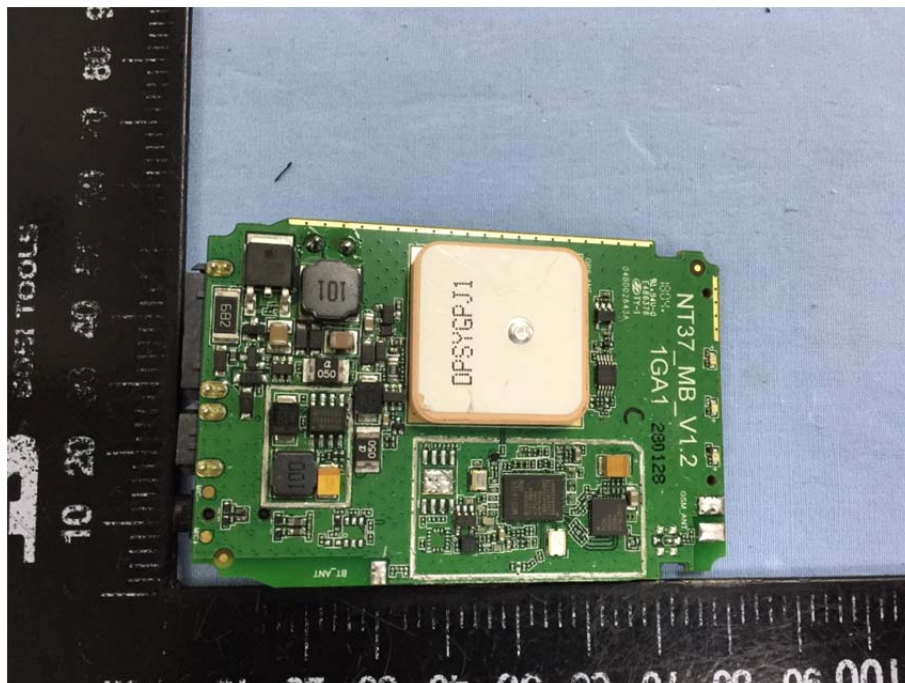
Solder Board-Component View 1

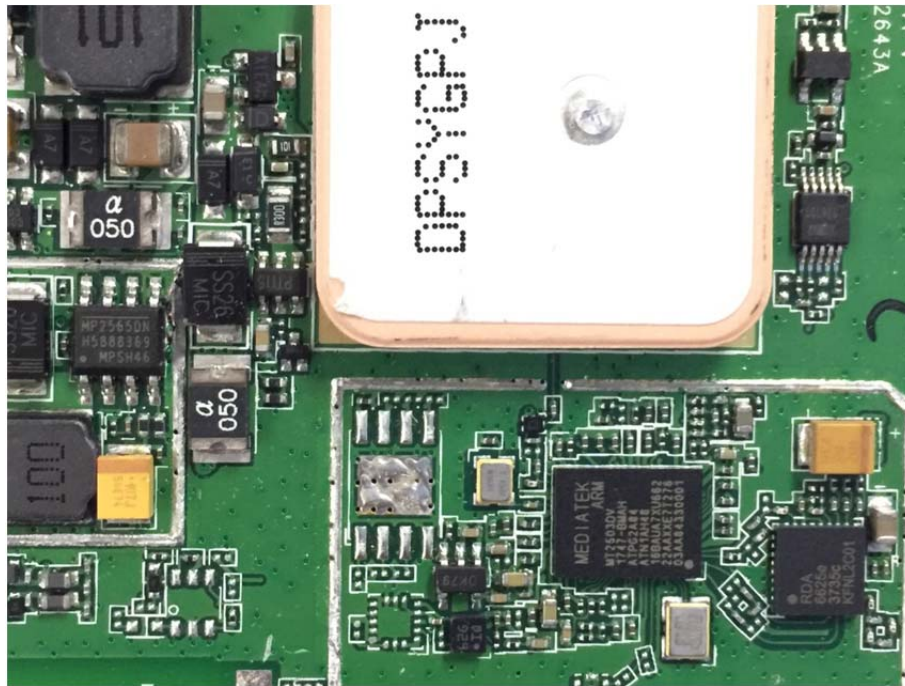


Solder Board-Component View 2

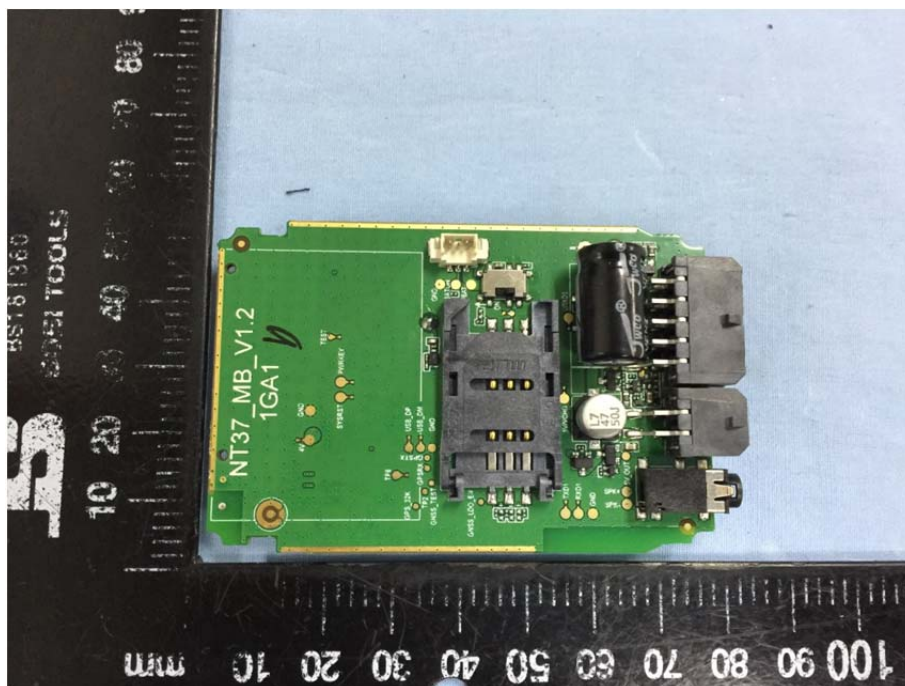


Solder Board-Component View 3





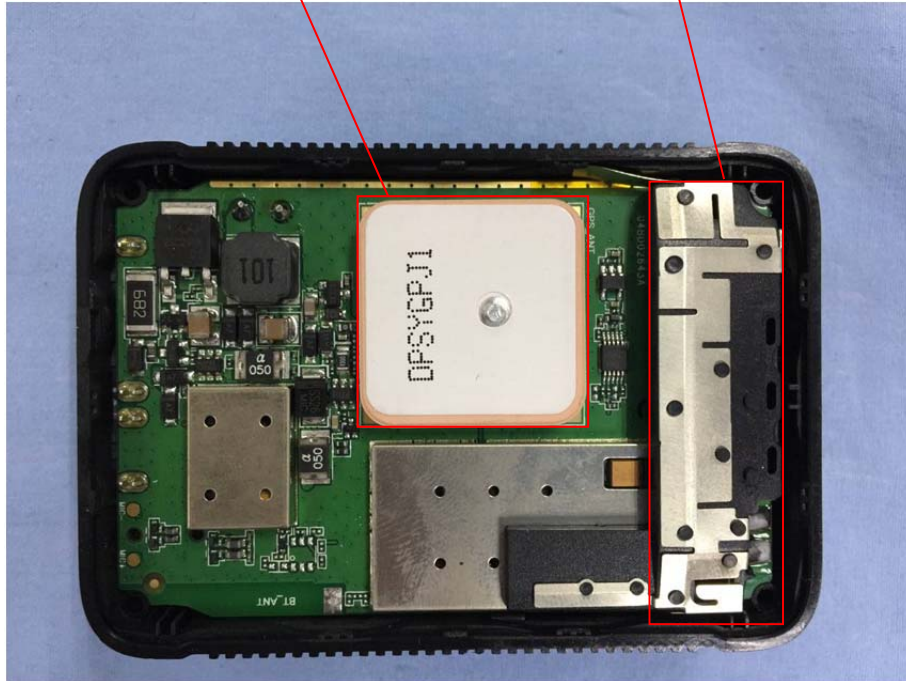
Solder Board-Component View 4

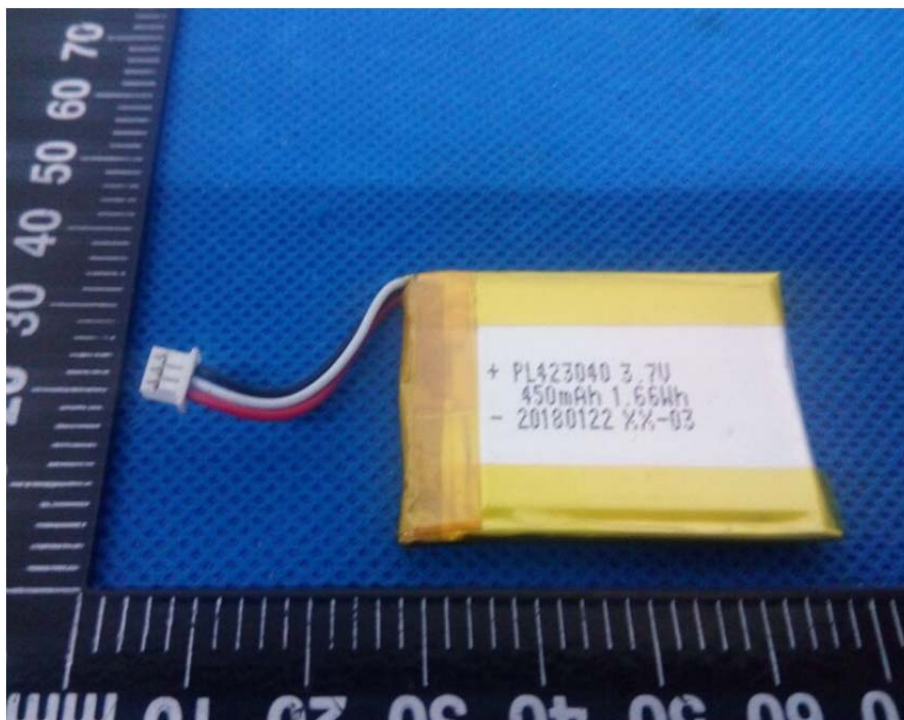
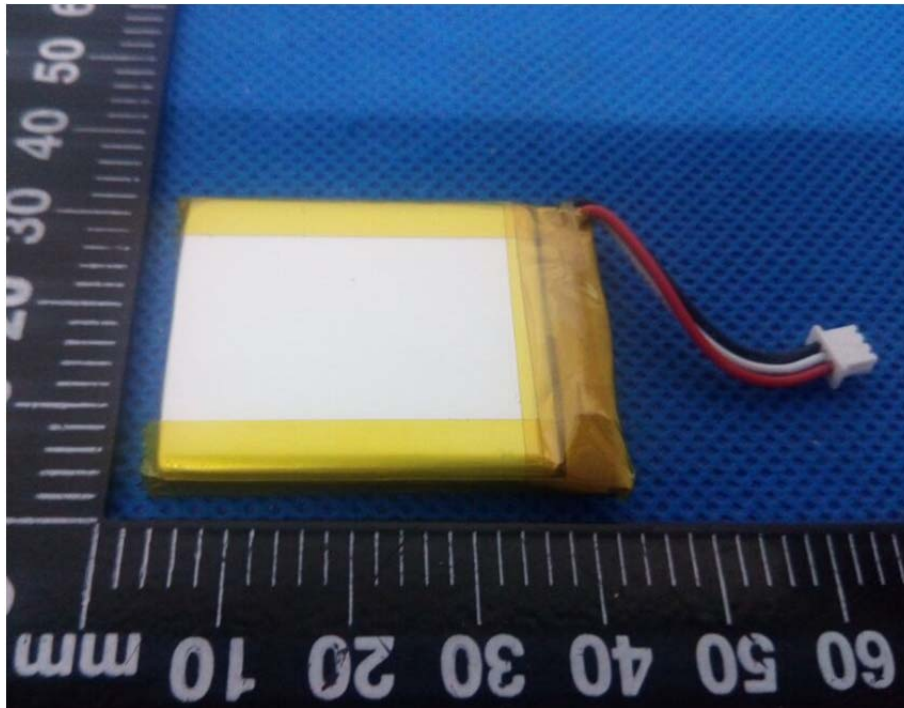


Antenna View

GPS Antenna

GSM Antenna



Battery View:

USERS MANUAL

Caution:

Use the Product in the environment with the temperature
Between -20°C and 45°C; Otherwise, it may damage your product.

For the following equipment:

Product Name: GPS VEHICLE TRACKER

Model: X3,GT810

Brand Name: /

Shenzhen Concox Information Technology Co., Ltd

E-mail: support07@concox.cn

hereby declares that this [Name: GPS VEHICLE TRACKER, Model: X3, GT810] is in compliance with the essential requirements and other relevant provisions of Directive 2014/53/EU.



For DC input only can use the 12/24V $\overline{\text{---}}$ 300mA

RED Article 10 2

-This product can be used across EU member states

RED Article 10 10

-The product is class 1 product, No restrictions

CAUTION
RISK OF EXPLOSION IF BATTERY IS REPLACED
BY AN INCORRECT TYPE.
DISPOSE OF USED BATTERIES ACCORDING
TO THE INSTRUCTIONS

Technical Characteristics of EUT	
2G	
Support Networks:	GSM, GPRS
Support Bands:	GSM900, DCS1800, GSM850, PCS1900
Frequency Range:	GSM900: Tx: 880-915MHz, Rx: 925-960MHz
	DCS1800: Tx: 1710-1785MHz, Rx: 1805-1880MHz
	GSM850: Tx: 824-849MHz, Rx: 869-894MHz
	PCS1900: Tx: 1850-1910MHz, Rx: 1805-1880MHz
RF Output Power:	GSM900: 32.80dBm, GSM1800: 29.30dBm
Modulation Type:	GMSK
Type of Antenna:	Integral Antenna
Antenna Gain:	GSM900: -0.5dBi, DCS1800: 0dBi
GPRS Class:	Class 12
GPS	
Frequency Range:	1575.42MHz