

PANEL : Cat 6 Ethernet Patch Panels

Overview

Manage traffic simply and effectively in Ethernet applications with Patch Panels. Each compact panel is equipped with IDC terminated PCB assemblies in either 568A or 568B pinouts.

Cat 5e and Cat 6 patch cords are also available to complete your installations.

Applications

- 10/100/1000 Ethernet connectivity
- Data applications
- Private/enterprise networks
- T1/DDS TDM connectivity and patching

Primary Benefits

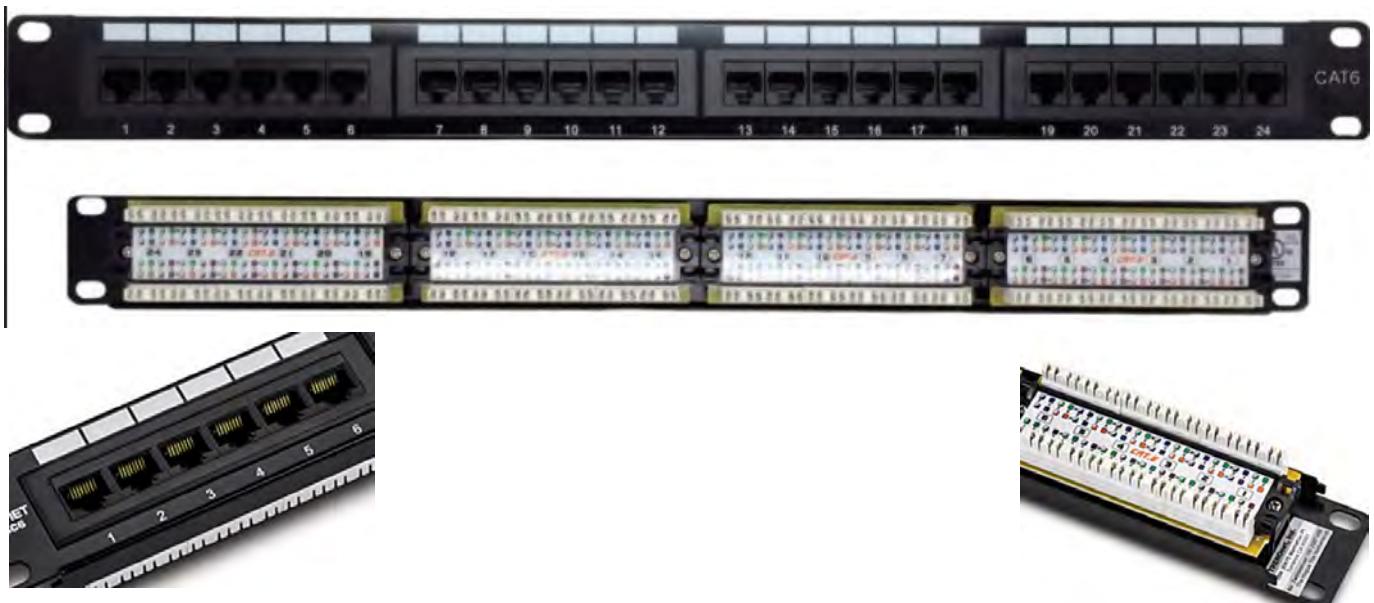
- Versatility for a variety of applications, including Ethernet 10/100/1000, T1 and DDS patching
- 24- and Category 6 panels
 - available 1RU and 2RU 19-inch rack mounting
- Rugged steel construction with rolled edges to eliminate flex during termination
- Integrated rear cable management bar provides cable strain relief
- Multiple cable tie locations to meet your standard practices and simplify moves, adds, changes and maintenance
- Clear write-on designation and easy-to-identify ports
- Complete line of Cat 6 patch cords in various standard lengths and colors also available

Cat 5e panels

- Exceed Category 5e TIA/EIA-568-B.2 specifications for component performance
- Handle data rates exceeding 100 MHz

Cat 6 panels

- Exceed Category 6 TIA/EIA-568-B.2 specifications for channel and link performance
- Handle data rates exceeding 250 MHz
- Angled and paired IDC pins provide a gas-tight connection and improved cable retention to maximize Cat 6 performance



Cat 6 Ethernet Patch Panels

Specifications

| | |
|-----------------------|--|
| Wiring | T568A or T568B |
| Insertion life | 750 cycles minimum, <0.2dB |
| Housing | High-impact UL94V-0 rated thermoplastic |
| IDC Blocks | Tin lead plated connector accepts 22-26 AWG solid UTP cable |
| Contact pressure | 100 grams min. |
| Insulation resistance | 500 megaohms |
| Contact resistance | 10 milliohms max. |
| Voltage/current | 140 VDC @ 1.5 amps max. |
| Dielectric withstand | 1000 VAC RMS @ 60 Hz min. |
| Compliance | Part 68, FCC Rules TIA/EIA Category 5e or 6 Specifications UL Listed |

Supports GigE, power over Ethernet

Ordering Information

Description
Category 6 Patch Panels
Code: **604.1.0137**

Accessories

Cat 5e Patch Cords (xxx = feet)

568A wiring

568B wiring

Cat 6 Patch Cords (xxx = feet)

568A wiring

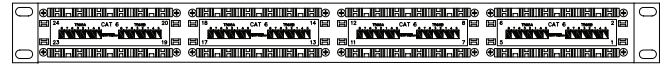
568B wiring

Type 110 punch-down tool

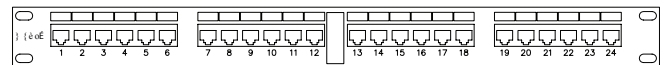
We can provide full bays and complete cable management to meet your needs. Contact your customer service representative

Panel Dimensions

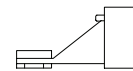
24-Port Panels: 19 in. W x 1.75 in. H x 3.5 in. D
(48.26 cm x 4.45 cm x 8.89 cm)
19 in. W x 3.5 in. H x 3.5 in. D



Rear View, 24-Port



Front View, 24-Port



Side View, 24-Port

