

HA-4305

Wireless Electronic Light Switch User Manual

1.Introduction

The series of wireless electronic light switch adopts wireless radio frequency control mode. remote non-directional, without space constraints. It can be wall and compartment remote control. Hundreds of millions of address codes never repeated. Similar products never string code. It has been widely used in many environments. Such as home, factory, warehouse, office room, store and so on.



2.Specification

Input voltage: 110 ~ 240V AC 50 / 60Hz

Standby power: <1W

Maximum power: 110V—200W(each road)

220V—400W(each road)

Operating Current: 3A (each road)

Maximum single load power: Resistance <600W

Inductive and capacitive: <200W

Applicable load: incandescent , energy saving lamps, fluorescent lamps, LED lights,etc.

Wireless distance: 60-80 meters in the open air.

Working frequency: 433/868MHz

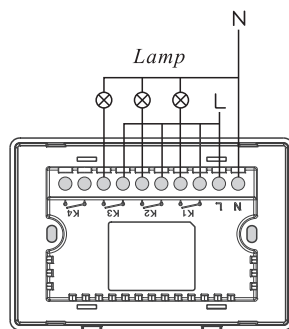
Control mode: mobile APP, remote control and manual touch control

Working temperature: -10 - 60 °C

Installation: into the wall to install

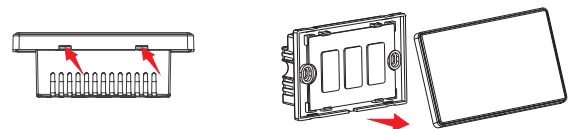
3. Installation And Wiring Diagram

A



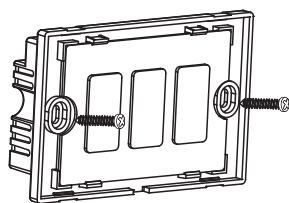
L: Line N: Neutral Line Wiring Diagram

B



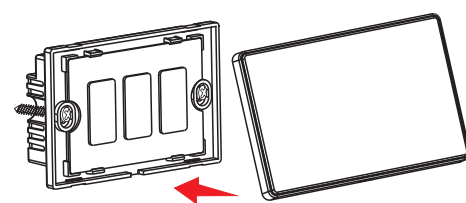
Open the snap joint by the instrument and separate the tempered glass cover.

C



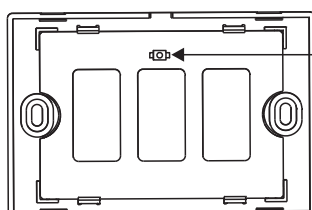
Take 2 screws to fix to the 86 type bottom box(not included)

D



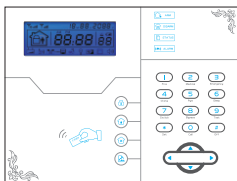
Close the cover.

4. Learning Code



Code Button

①Alarm Control Panel Learning Code(Support 8CH)



Enter into the light switch enrolling status from the panel system, first touch the code button, Lamp Button flashes red and blue color at one time, press CH01 again within 2 seconds(If no operations within 2 seconds, lamp button flashes red and blue color again and exit to the enrolling mode) , the panel will give a voice indication enroll successfully, continue to set CH02 and CH03 by the same way or press panel's back button to exit.

②EAVS NVR Learning Code(Support 255CH)



First enter into the menu of enrolling the switch, first touch the code button, Lamp Button flashes red and blue color at one time, press CH01 again within 2 seconds(If no operations within 2 seconds, lamp button flashes red and blue color again and exit to the enrolling mode).Once there is address code of the switch pop up, save and you can continue to enroll extra two channels by the same way or exit.

③Wireless Remote Controller



Press the code button for 2s, it flashes red and blue color for three times, within 10s, press any lamp button in the remote controller.

After 10s, the switch will exit to enroll, or after the switch enroll into the remote control, press the code button for once, when existing, the blue and red light will flash once.

Same switch can be enrolled into 10 remote controllers at most.

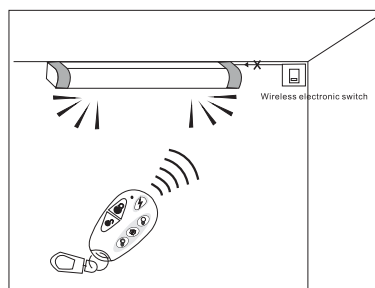
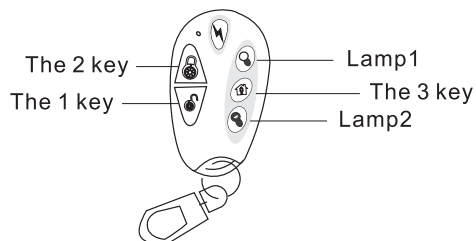
Delete Code:Long press the black button for 8s, the red and blue led light will flash 6 times respectively,then the code of remote is deleted from the switch.

5.Operation For Remote Controller.

CH01: press lamp 1

CH02: press lamp 2

CH03: press lamp 1 and lamp 2 at the same time.



- Note:
1. Please do not install when electrical power is on.
 2. Please do not install in high humid environment.
 3. Please do not use it beyond the loading