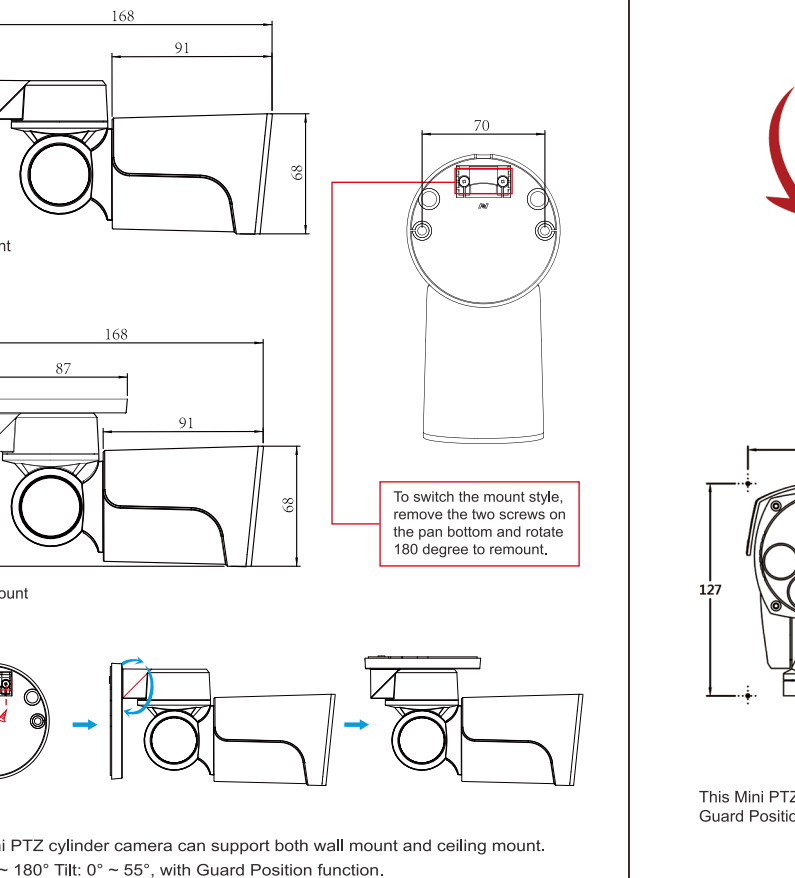


# IP PTZ CAMERA USER GUIDE



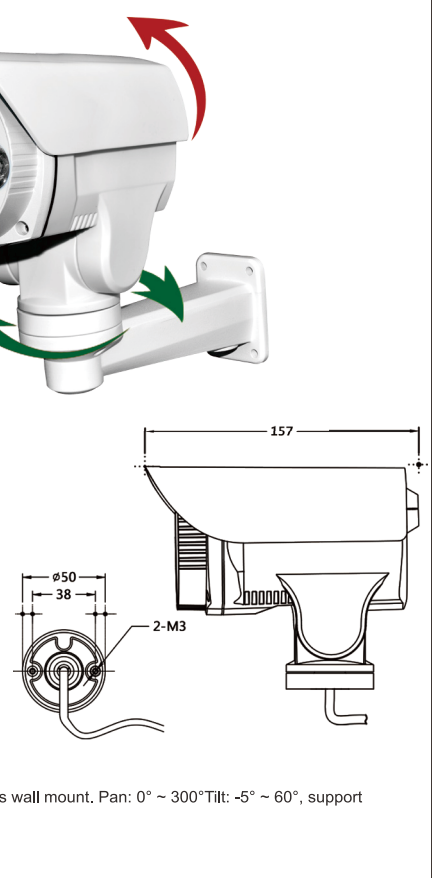
V1.0

TYPE A:



1

TYPE B:



2

TYPE C:



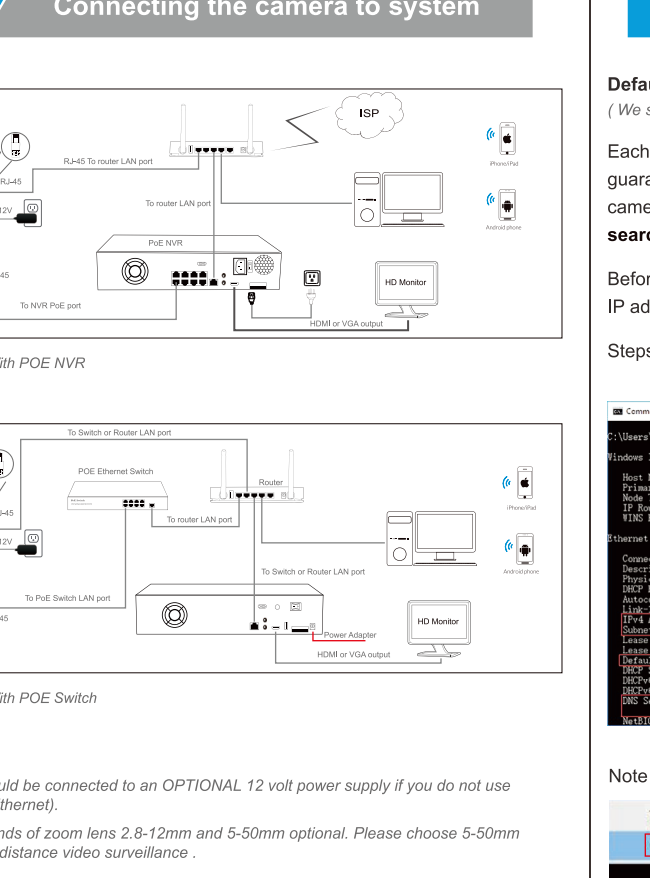
3

TYPE D:



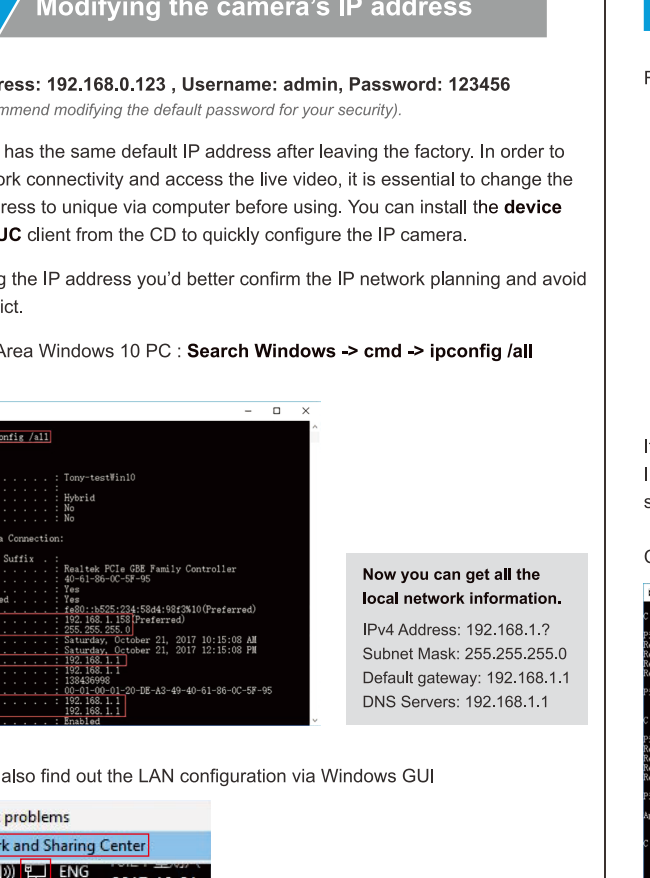
4

1



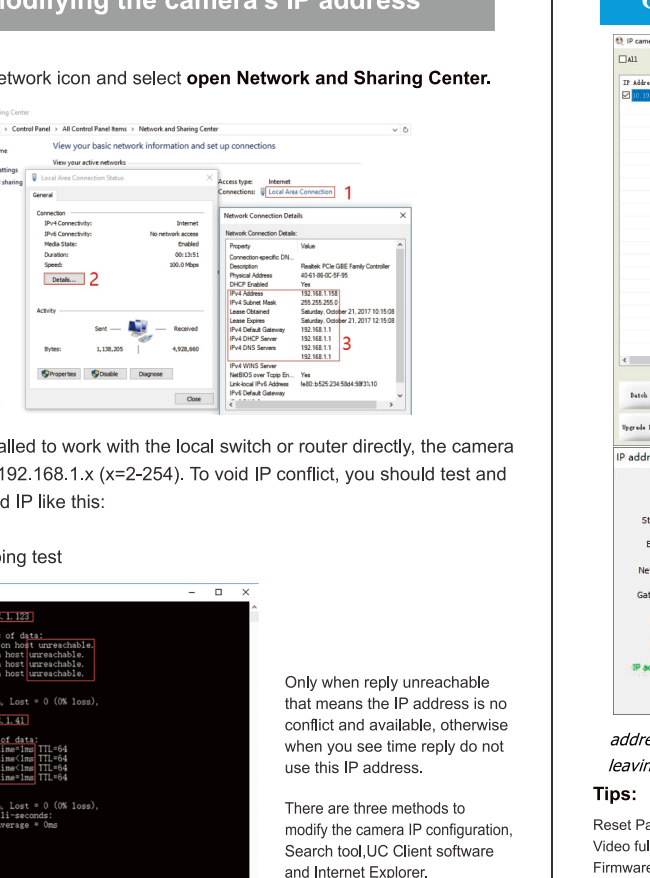
5

2



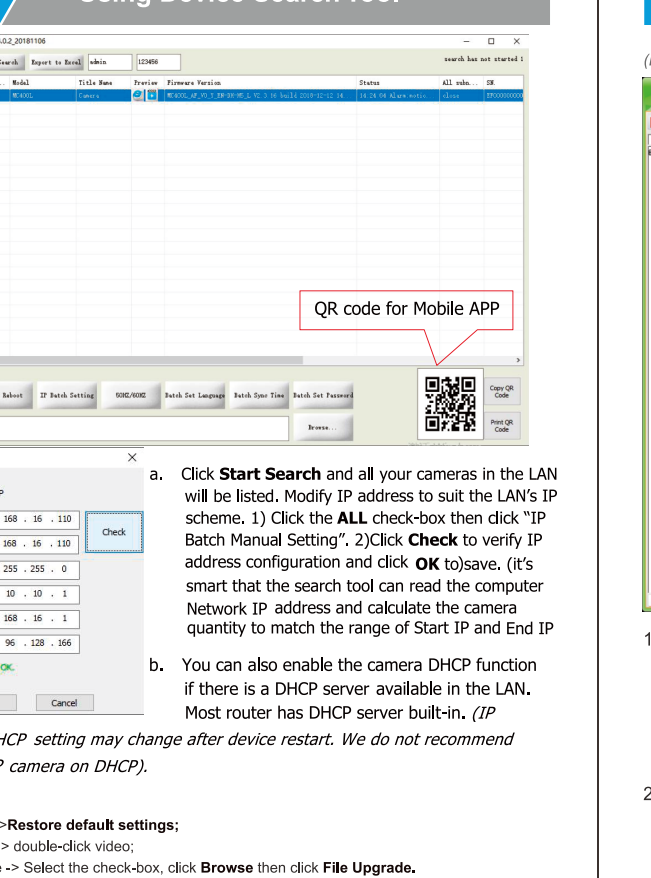
6

2



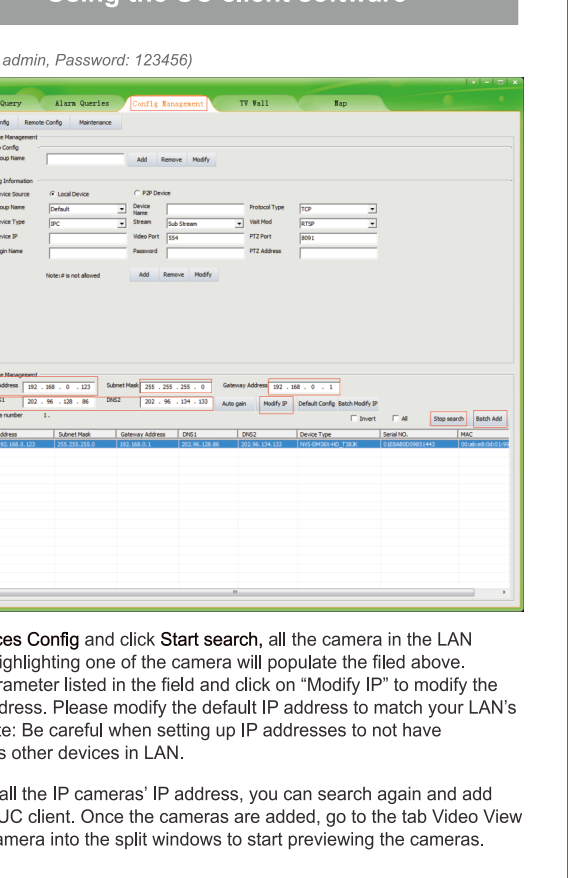
7

3



8

4

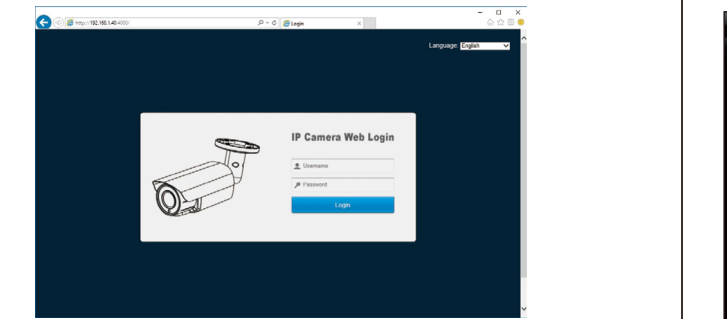


9

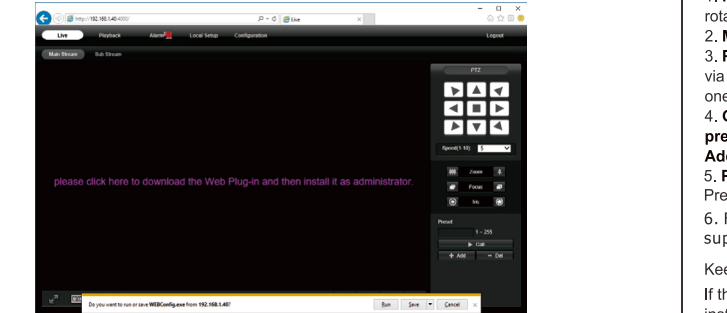


To access the camera's web interface, type in the IP camera's IP address in Internet Explorer's URL bar to gain access to the login page. Please modify IP address to the same subnet if login page can not load.

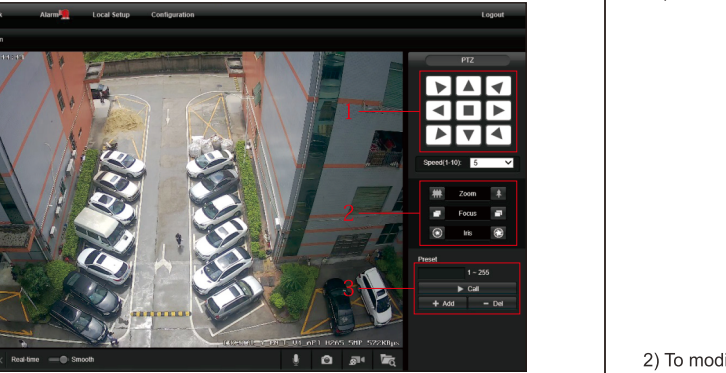
(Default user name: **admin**, Password: **123456**) Firefox ESR and IE are supported.



From the login page, select your familiar language, then log in with the username and password.



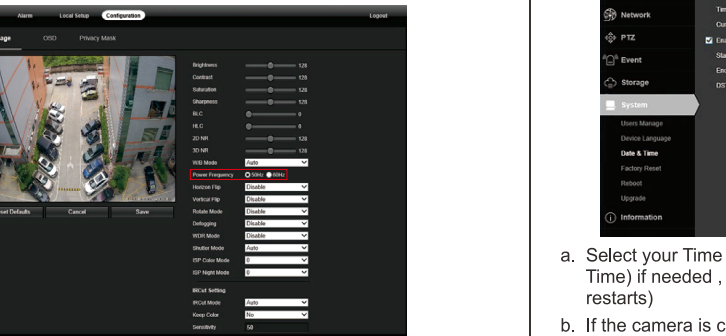
Install **Web Plug-in** when red line characters prompted. You may have to download **WEBConfig.exe** and run it as administrator. You can also install the **WEBConfig.zip** from the included CD if some uncertain problems happen during Web Plug-in loading. After installation, restart or refresh your web browser and access the IP again. The live video will start automatically after login successfully.



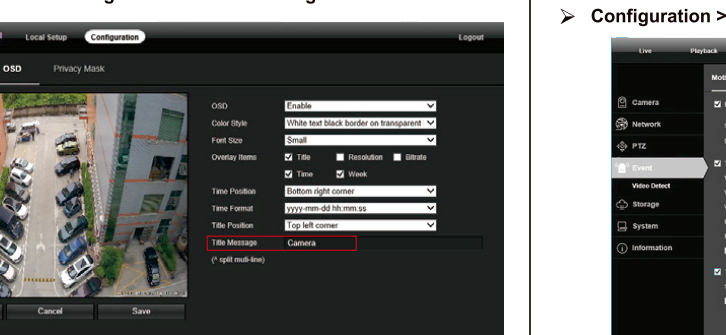
1. **Rotation direction control** -- Left/Right horizontal rotation angle is up to 180°. Up/Down vertical rotation angle can reach to 55°. Rotation speed can be adjusted.
2. **Motorized zoom lens control** -- camera can do optical **Zoom In** and **Zoom Out**.
3. **Preset** -- to remember a position, input a number and click **Add**. Then you can directly go back via call the number. Delete a preset: input a number and click **Del** (Type A camera only supports one preset point)
4. **Guard Position** -- 1)remember preset 1: move the camera to an import position then **add** to preset 1 ; 2)enable Guard Position: **Add** preset 76 ->**Call** preset 1; 3)disable Guard Position: **Add** preset 76 ->**Call** preset 2.
5. **Preset Cruise** -- 1)remember some presets: add preset 1 -> **add** preset 2 and so on; 2)enable Preset Cruise: **Call** preset 98; 3)stop Preset Cruise **Call** preset 96. (Only type D supports this feature)
6. For more advanced functions , go to Appendix 1 for command list. (Only type D supports this feature)

Keeping pressing on live video and dragging for **Digital Zoom**.  
If there is a delay in video response when accessing remotely, please switch to Sub Stream instead. To learn the function of each button, just put the mouse on, it will show screen tips.

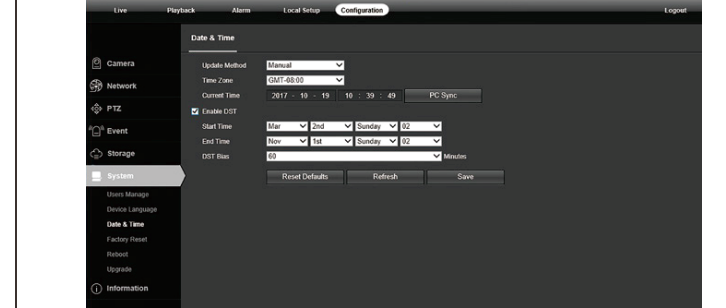
- 1) Power System frequency configuration (**50Hz/60Hz**)  
➤ **Configuration > Camera > Image > Power Frequency**  
To avoid the video flicker, the camera should be set to right working frequency to suit the country electric system. The countries that use 60Hz have USA, Canada, Japan, Korea, Taiwan, Brazil, Philippines, Mexico. Other countries apply 50Hz.



- 2) To modify the camera Title name and Time & Date  
➤ **Configuration > Camera > Image > OSD > Title Message**

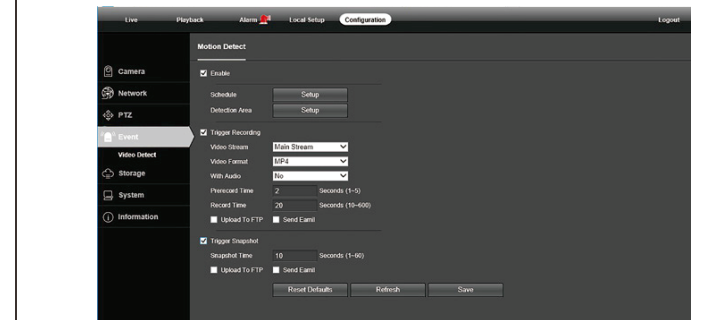


- **Configuration > System > Time setup**  
There are two time update modes available, **Manual** and **NTP**.



- a. Select your Time Zone, and click PC Sync. Set up your DST (Daylight Savings Time) if needed , click Save. (Time and date will reset to 2000-01-01 if camera restarts)
- b. If the camera is connected to the Internet, you can set up a NTP server for the camera to sync the time and date automatically.
- 3) To enable Motion Detection Alarm

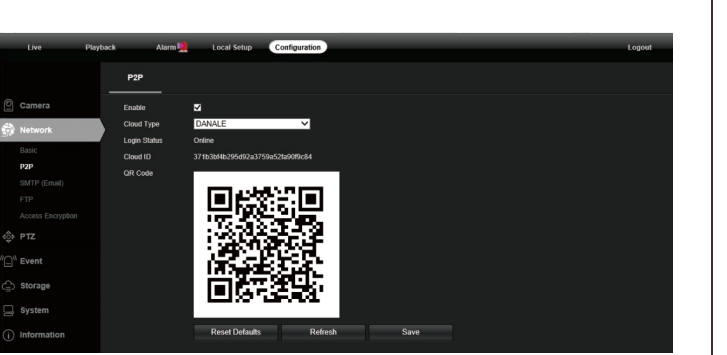
- **Configuration > Event > Video Detection**



When Motion is detected , there is a small alarm light pup up beside the Alarm menu. You can also setup an email address or FTP storage server to receive the motion snapshot. (Trigger recording will work only if memory card or NFS NAS connected. )

- 4) To find the device Cloud ID and QR code for p2p remote access

- **Configuration > Network > P2P**

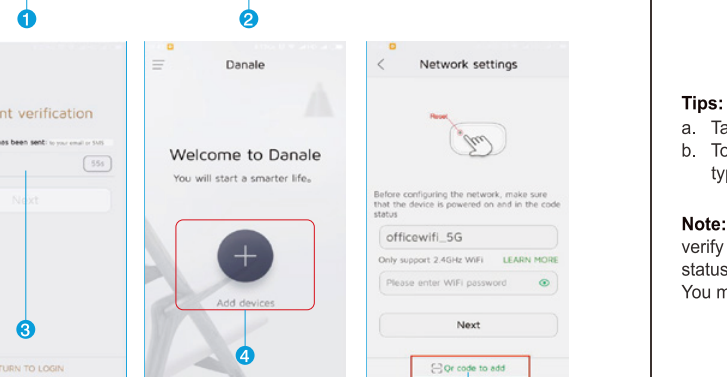
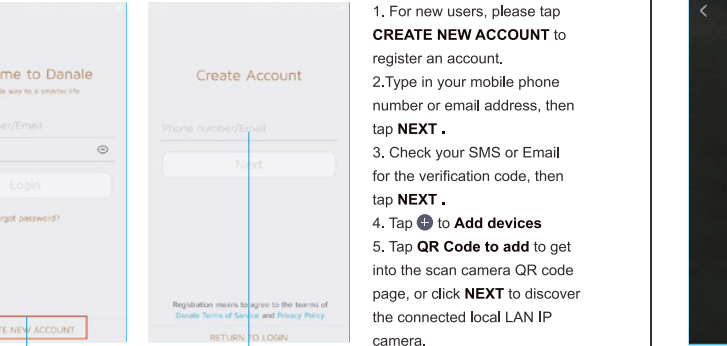


Using the P2P ID and QR code, you can access the camera remotely anywhere via smart phone with Internet access. Please register an account via mobile phone after installing the **Danale** APP from APP Store or Google Play Market, then log in and add your camera to start previewing.

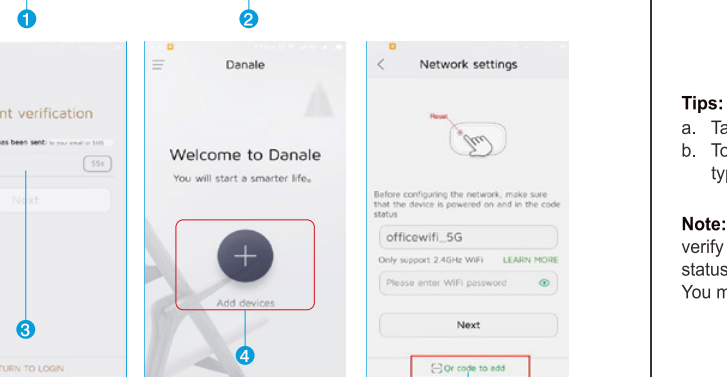
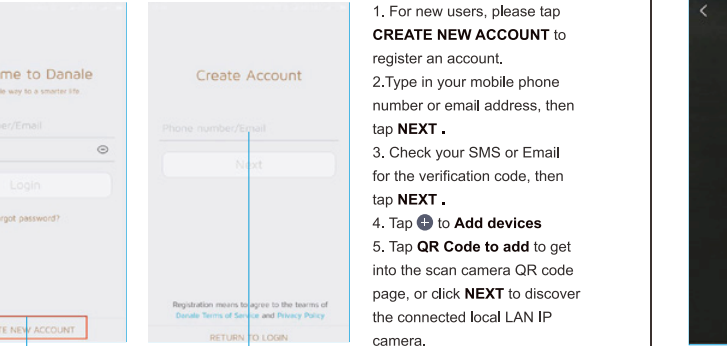
Or you can go to the website <http://www.danale.com/> to register if you need PC remote access. You can download APP from the website to find out more.

Tips: if the Login Status shows Offline, please check your Internet connection and IP camera TCP/IP Network configurations. Please make sure to use a valid DNS server IP in the TCP/IP Network setting.

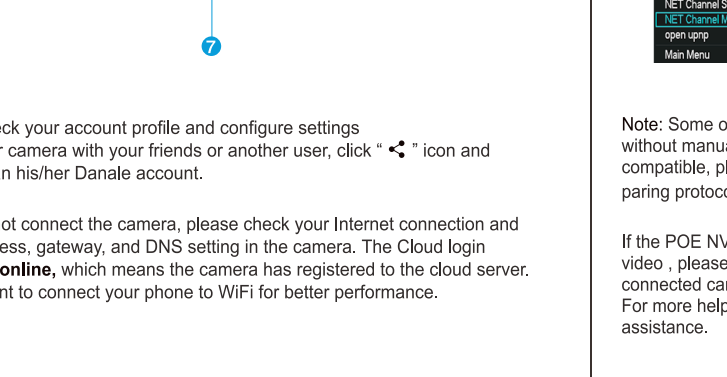
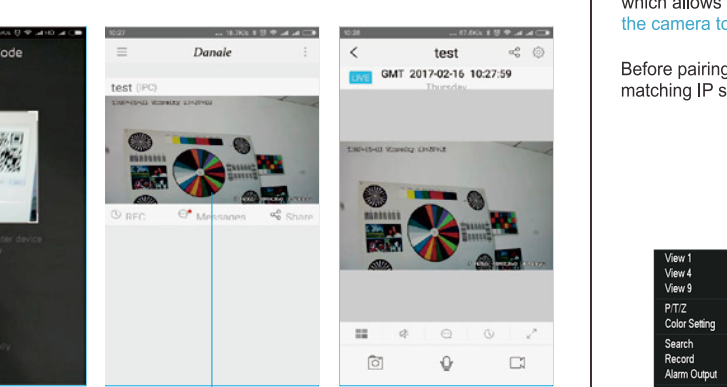
Visit the Apple App Store or the Google Play Store to download the Danale app for iOS or Android devices. (The app file is also included in the CD. For transferring the file manually to your smart device, please refer to your smart device's manual). After installation, tap the icon to launch the Danale app. For first time use, please create a new account by following the steps below:



1. For new users, please tap **CREATE NEW ACCOUNT** to register an account.  
2.Type in your mobile phone number or email address, then tap **NEXT** .  
3. Check your SMS or Email for the verification code, then tap **NEXT** .  
4. Tap **+** to **Add devices**  
5. Tap **QR Code** to add to get into the scan camera QR code page, or click **NEXT** to discover the connected local LAN IP camera.

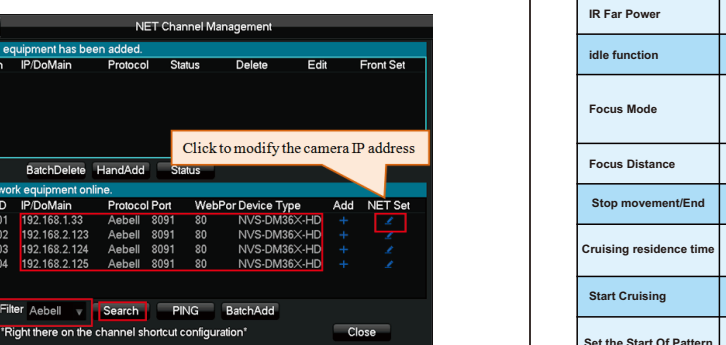


6. Put the IP camera QR code in the app effective scan area, and then give a nickname for the recognized camera.
7. Tap the camera list to start live video.



The IP camera supports standard ONVIF protocol and it can be added to third-party video recorder. Some of the models support both H.264 and H.265 encode mode. The H.265 encode cameras can compress the video data to a very low bit rates which allows more video data storage than normal H.264 camera. **Only configure the camera to H.265 mode when your NVR supports H.265 mode**

Before pairing cameras to the NVR, make sure the NVR and cameras have valid and matching IP scheme.



Note: Some of the PoE NVR supports Plug & play, which allows you to get video without manually search and add. if Plug & play feature is not available or not compatible, please follow the NVR manual steps and select ONVIF protocol as the pairing protocol. (camera default password: 123456)

If the POE NVR can not discover the connected camera or can not display the camera video , please check it's internal POE interface IP configuration and make sure all connected cameras and NVR POE interface are in the same subnet schema. For more help please contact the both NVR and IP camera suppliers for technical assistance.

Functions	Command Steps
IR MODE	SET 70, CALL 1.LED AUTO 2.LED ON 3.LED OFF
IR Sens itivity	SET 71, CALL 1-10. 1-10Lux (IR open illuminance 1-10Lux)
IR Near Power	SET 72, CALL 1-10
IR Far Power	SET 73, CALL 1-10
idle function	SET 76, CALL 1.PRESET 2.SCAN 3.TOUR 4.PATTERN 5.OFF
Focus Mode	SET 77, CALL 1.AF ZOOM PUSH MODE(Focus Only When Zoom Changed) 2.AF PTZ PUSH MODE(PTZ or ZOOM will Start Focus) 3.AF AUTO MODE(Auto Mode)
Focus Distance	SET 78, CALL 1. 1M5 2. 3M 3. 6M 4.INF
Stop movement/End	Call 96
Cruising residence time	SET 75, CALL 1-255
Start Cruising	CALL 98
Set the Start Of Pattern	SET 86
Set the Stop Of Pattern	CALL 96
Start Pattern	CALL 97
Setting Scan Left border	SET 92
Setting Scan Right border	SET 93
Start Scan	CALL 99
Reset	CALL94
Factory Default	CALL82

1. Why can't I open the default IP address 192.168.0.123 via web browser?  
Check your computer's IP address before accessing the camera. If the IP address does not match the 192.168.0.x scheme, please install the IP search tool from the CD to modify the camera's IP address. Make sure the IP address of the camera matches the LAN IP scheme. For example, if the LAN is 192.168.1.xxx, then set the IP camera to 192.168.1.123 and so on. Only IE and Firefox ESR windows computer are supported by the camera.
2. How to reset the password?  
The default Username: admin, Password: 123456. If you lost the password or would to reset the camera's setting, please install the search tool to search the camera IP and click Reset factory button.
3. How to upgrade the IP camera?  
1) Ask the supplier for the suitable firmware  
2) you can use the web browser, search tool, or PC client to upgrade the camera  
3) go to the Configuration > System > update, click browse and select the firmware, then click Upgrade button and wait for the operation to complete.
4. How to fetch the RTSP video stream and http snapshot?  
1) Main Stream: rtsp://IP:554/h264?username=admin&password=123456  
2) Sub Stream: rtsp://IP:554/h264cif?username=admin&password=123456  
3) low resolution snapshot: http://cgi-bin/snapshot.cgi?stream=1  
4) HD snapshot : http://IP/cgi-bin/snapshot.cgi?stream=0
5. Why does the NVR not show image after adding your IP camera?  
1) Make sure you selected the right protocol and enter the correct username and password when adding the cameras.  
2) Make sure the NVR and IP camera are the same IP scheme.(eg. NVR:192.168.1.x, and IP camera:192.168.1.y),  
3) try changing the camera encode mode to H.264 if the NVR can't support H.265. (Configuration -> Camera -> Video > Encode mode: H.264)
6. How to make the NVR record in motion detection mode?  
1) Enable the IP camera motion detection function via web browser or Search configure tool,  
2) add the IP camera via ONVIF protocol,  
3) change the NVR record mode to Motion Detection mode,  
4) check the NVR screen MD icon and try playback. Please refer to your NVR manual for NVR motion record option.
7. Where can I control the motorized auto focus lens zoom?  
1) Using the camera's web interface;  
2) Control by PC client software UC;  
3) Roll the mouse wheel at the search tool preview window;  
4) Find the PTZ menu in your NVR to control lens zoom.